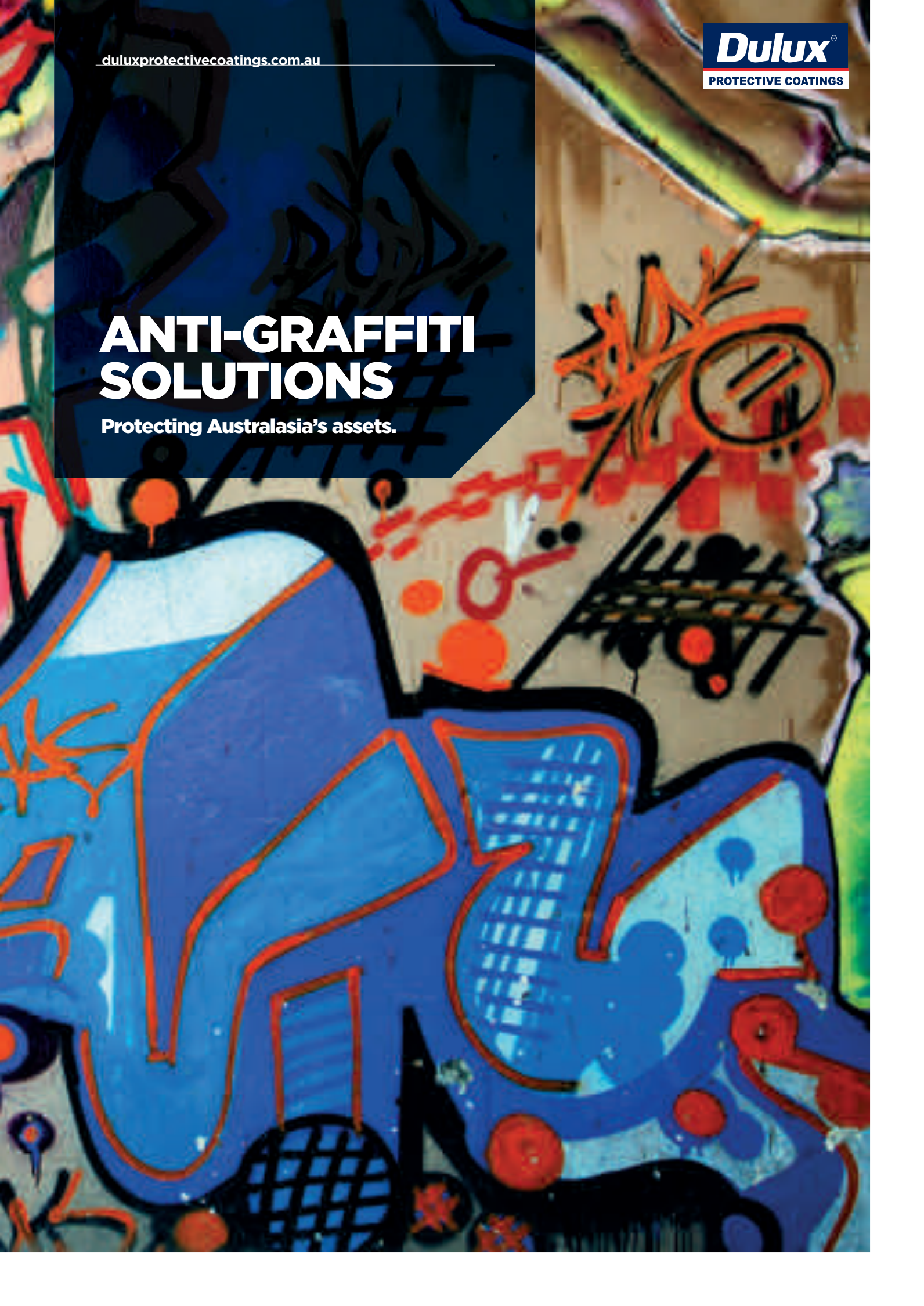


ANTI-GRAFFITI SOLUTIONS

Protecting Australasia's assets.



SURFACE PROTECTION

Our built environment is constantly exposed to the ravages of graffiti, atmospheric pollution, weathering and litter. Graffiti can be described as the deliberate defacement of property without the owner's consent. Graffiti artists can use anything from aerosol cans to heavy-duty markers, crayons and even lipstick to graffiti property.

Areas of high visibility, such as train stations, fencing, factories, shopping centres, underpasses, overpasses and public spaces are exceedingly prone to graffiti attack as these places present a more permanent showcase for graffiti artists' markings.

When graffiti is quickly removed, subsequent graffiti is less likely to appear, as these areas are not deemed to be worth the effort by graffiti artists.

Graffiti however, is not the only problem that property owners face. Atmospheric pollution also affects surfaces, not only by depositing unsightly grime, but also by chemically attacking the surface and causing it to erode.

An effective plan to maintain a clean and attractive environment supporting the preservation of property value must include an effective anti-graffiti protective coating system.

Dulux Protective Coatings offers a comprehensive range of long term and sacrificial anti-graffiti solutions to assist in the management of your surface protection requirements.



PRODUCT RANGE COMPARISON

		Invisible Treatment		Colour Coating		Clear Coating	
		Surfaceshield™ S	Surfaceshield™ HD	Weathermax® HBR	Acrathane® IF		Durethane™
Chemistry		Single pack water based vegetable biopolymer	Single pack water based halogenated copolymer	Two pack solvent based polyurethane	Two pack solvent based acrylic		Two pack solvent based polyurethane
VOC content		<1 g/L	<1 g/L	<280 g/L	<520 g/L		<430 g/L
Colour(s)		Invisible	Invisible	Full range of colours & micaceous iron oxide	Full range of colours & sparkling aluminium	Clear gloss & clear low sheen	Clear gloss & clear flat
Isocyanate free		✓	✓	✗	✓	✓	✗
Application	Apply by airless spray or conventional	✓	✓	✓	✓	✓	✓
	Apply by brush	*	*	✓	*	*	*
	Apply by roller	*	*	✓	*	*	*
Porous Surfaces	Natural Stone	✓	✓	✓ (suitably primed)	✓ (suitably primed)	✓	✓
	Concrete	✓	✓	✓ (suitably primed)	✓ (suitably primed)	✓	✓
	Fibre cement panelling	✓	✓	✓ (suitably primed)	✓ (suitably primed)	✓	✓
	Clay/Brick Masonry	✓	✓	✓ (suitably primed)	✓ (suitably primed)	✓	✓
	Non-glazed tiles	✓	✓	✓ (suitably primed)	✓ (suitably primed)	✓	✓
	Wood	✓	✓	✓ (suitably primed)	✓ (suitably primed)	✓	✓
	MDF	✗	✗	✓ (suitably primed)	✓ (suitably primed)	✓	✓
Non-porous surfaces	Pre-painted surfaces	†	✗	✓	✓	✓	✓
	Ferrous metals	✗	✗	✓ (suitably primed)	✓ (suitably primed)	✓ (suitably topcoated)	✓ (suitably topcoated)
	Non-ferrous metals	✓	✗	✓ (suitably primed)	✓ (suitably primed)	✓ (suitably topcoated)	✓ (suitably topcoated)

* Suitable for small areas only. Additional coats may be required to attain the specified thickness. Refer to the product data sheet.

† Please contact a Dulux Protective Coatings Consultant.



Retention St Overpass, TAS - Surfaceshield™ S

SURFACESHIELD™

Surfaceshield™ consists of a range of biodegradable products designed to provide protection against atmospheric pollution, graffiti, vandalism and everyday contaminants. The Surfaceshield™ range offers a cost effective solution to protect and preserve surfaces in our local community.

SURFACESHIELD™ S

Sacrificial Anti-Graffiti Surface Treatment

Surfaceshield™ S is a surface treatment that is comprised of non hazardous material that can be applied onto a range of surfaces to provide protection against graffiti and normal atmospheric dirt and grime.

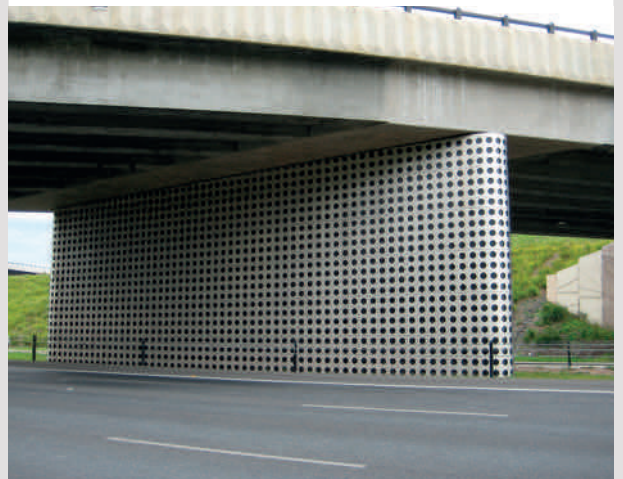
Features

- Sacrificial vertical surface treatment
- Quick application
- Re-application required after graffiti removal
- Removal of most graffiti types with medium pressure hot water cleaning

Areas of use/application

- Protection against vandalism caused by graffiti (paint and permanent markers), atmospheric pollution, dirt and grime
- Refer to the table on page 2 for applicable substrates

CASE STUDY



Eastlink Monash Interchange - Victoria

Metal Pier Facades

1 x Surfaceshield™ S



SURFACESHIELD™ HD

Non-Sacrificial Anti-Graffiti Surface Treatment

Surfaceshield™ HD (heavy duty) is a non-sacrificial coating offering graffiti protection after a single application. It is specially formulated to be used on porous substrates such as concrete, stone and brick. Its non film-forming characteristics means Surfaceshield™ HD penetrates the surface without modifying the appearance of the substrate.

Features

- Long-term surface protection
- Single application
- Removal of most graffiti types with high pressure hot water cleaning
- Use of cleaning agents or graffiti removers may be required for removal of stubborn contamination

Areas of use/application

- Protection against vandalism caused by graffiti (paint and permanent markers), atmospheric pollution, dirt, grime, grout staining and marking
- Refer to the table on page 2 for applicable substrates

CASE STUDY



MLC Building Melbourne - Victoria

1 x Surfaceshield™ HD



Western Ring Road, VIC - Weathermax® HBR

WEATHERMAX® HBR

High Build Recoatable Gloss Polyurethane

Weathermax® HBR is a two-pack, high build polyurethane, specially formulated for ease of brush and roller application as well as spray application. This coating provides excellent chemical and solvent resistance making it the ideal maintenance coat in areas prone to graffiti.

Features

- Superior gloss and colour retention
- Good chemical and abrasion resistance
- Brush, roller and spray application
- Available in over 5,000 colours using the Colorfast® tint system
- Accelerator available for use in cooler conditions

Areas of use/application

- High performance coating for commercial and industrial environments
- High durability offers lower maintenance
- Used in combination with a graffiti remover as a maintenance coating in areas prone to graffiti attack

CASE STUDY



Southern Gateway Project Mandurah – WA

Concrete walls and traffic barriers

1 x Durebild® STE @ 75µm

1 x Weathermax® HBR @ 100µm



Tiger Brennan Drive, NT - Weathermax® HBR



City Link Melbourne, VIC - Weathermax® HBR



Richmond Station Melbourne, VIC - Acrathane® IF

ACRATHANE® IF

Isocyanate Free Catalysed Acrylic Finish

Acrathane® IF is an isocyanate-free catalysed acrylic finish for both exterior and interior areas. Its isocyanate-free formulation can be preferable for on-site spray application.

Features

- Isocyanate free
- Good chemical and abrasion resistance
- Available in over 5,000 colours
- Gloss and low sheen clear finishes can be used over painted and porous surfaces

Areas of use/application

- Fast drying coating for commercial and industrial environments
- Used in combination with a graffiti remover as a maintenance coating in areas prone to graffiti attack

CASE STUDY



**National Australia Bank Headquarters – Victoria
Structural Steelwork**

1 x Zincode® 402 @ 75µm

1 x Duremax® GPE @ 125µm

1 x Acrathane® IF @ 60µm



State Basketball Centre Melbourne, VIC - Durethane™

DURETHANE™

Polyurethane Finish

Durethane™ is a high performance, non-yellowing, polyurethane clear finish with outstanding chemical and abrasion resistance. Its high UV resistance allows it to be used to protect both interior and exterior walls and trims.

Features

- Outstanding chemical resistance
- Resists moisture, grease, detergents and chemicals
- High gloss retention
- Non yellowing
- Excellent adhesion and abrasion resistance
- Available as a full gloss and flat clear coat

Areas of use/application

- Protection of interior walls and trim in areas of high demand such as passageways and corridors
- High durability clear coat for exterior applications

CASE STUDY



Metro Train Carriage - Victoria

1 x Durepon® Sandable Primer @ 60µm

1 x Durethane™ @ 40µm

GRAFFITI REMOVAL

The extent of graffiti removal can vary depending on the type of material used to impart the graffiti and how long the graffiti has been allowed to cure before cleaning. Complete removal of graffiti may not always be achieved and therefore cannot be guaranteed.

The main advantage of using the sacrificial system Surfaceshield™ S is that there may only be minimal need to use a chemical cleaner. This is particularly important if the substrate is sensitive to an aggressive cleaner (ie old natural stone) or within a sensitive environment. The cleaning regime for Surfaceshield™ S is hot water (60-80°C) to activate the surface treatment and then medium water pressure. After removal, Surfaceshield™ S will need to be re-applied to the affected area to continue the protection of the substrate.

Surfaceshield™ HD is a surface treatment that offers long term graffiti protection. It allows for the graffiti to be removed with high pressure hot water (60-80°C) cleaning. The use of a chemical agent may be required to remove persistent stains. Please refer to the technical data sheet for further details.

Long term anti-graffiti coatings such as Durethane™, Weathermax® HBR and Acrathane® IF have high chemical resistance and can withstand the use of graffiti-removing agents. Graffiti-removing agents are chemically active materials such as solvents and/or surface-active agents that break down the graffiti and remove it from the surface. Nylon pads can be used in conjunction with graffiti removers to aid the removal of heavy or stubborn deposits of graffiti.

There are many commercially available graffiti removers including Selleys® Muck-off® Graffiti Remover and Dumond® Watch Dog® CPU Graffiti Remover. Please refer to the technical data sheet of the graffiti remover for the safe use of the product. It is recommended to first test a small area with the graffiti remover to ensure the product does not compromise the underlying coating.

To avoid damage to the existing coating, all surfaces should be thoroughly rinsed or cleaned to ensure the complete removal of any remaining graffiti removal chemical.

ANTI-GRAFFITI APPLICATION GUIDE

This is intended as a guide only, and not to be used as a specification. It is recommended that your specific project needs are discussed with a Dulux Protective Coatings Consultant. Refer to the data sheet for further information.

SURFACESHIELD™ HD + SURFACESHIELD™ S					
SURFACE	PREPARATION		SYSTEM	DFT	m ² /L
SMOOTH (concrete)	Clean and degrease surface to remove contaminants and bond breakers	1st Coat 2nd Coat	Surfaceshield™ HD Surfaceshield™ S	N/A N/A	5 3-4
POROUS (bricks, natural stone)	Clean surface to remove contaminants. Take care when using high pressure water blast to avoid damage to mortar joints or natural stone surface	1st Coat 2nd Coat	Surfaceshield™ HD Surfaceshield™ S	N/A N/A	4 3-4
VERY POROUS (sandstone)	Clean surface to remove contaminants. Careful sanding may be necessary to remove persistent contaminants and surface defects	1st Coat 2nd Coat 3rd Coat	Surfaceshield™ HD Surfaceshield™ S Surfaceshield™ S	N/A N/A N/A	3-4 2-3 2-3
SURFACESHIELD™ HD					
SURFACE	PREPARATION		SYSTEM	DFT	m ² /L
FIBRE CEMENT PANELLING	Ensure all surfaces are clean and dry. Remove all or loosely adherent fibre particles	1st Coat 2nd Coat	Surfaceshield™ HD Surfaceshield™ HD	N/A N/A	5 5
SMOOTH (concrete)	Clean and degrease surface to remove contaminants and bond breakers	1st Coat	Surfaceshield™ HD	N/A	5
POROUS (bricks, natural stone)	Clean surface to remove contaminants. Take care when using high pressure water blast to avoid damage to mortar joints or natural stone surface	1st Coat	Surfaceshield™ HD	N/A	4
VERY POROUS (sandstone)	Clean surface to remove contaminants. Careful sanding may be necessary to remove persistent contaminants and surface defects	1st Coat	Surfaceshield™ HD	N/A	3-4
SURFACESHIELD™ S					
SURFACE	PREPARATION		SYSTEM	DFT	m ² /L
SMOOTH (concrete)	Clean and degrease surface to remove contaminants and bond breakers	1st Coat	Surfaceshield™ S	N/A	4-5
POROUS (bricks, natural stone)	Clean surface to remove contaminants. Take care when using high pressure water blast to avoid damage to mortar joints or natural stone surface	1st Coat 2nd Coat	Surfaceshield™ S Surfaceshield™ S	N/A N/A	3-4 3-4
VERY POROUS (sandstone)	Clean surface to remove contaminants. Careful sanding may be necessary to remove persistent contaminants and surface defects	1st Coat 2nd Coat 3rd Coat	Surfaceshield™ S Surfaceshield™ S Surfaceshield™ S	N/A N/A N/A	2-3 2-3 2-3

WEATHERMAX® HBR					
SURFACE	PREPARATION		SYSTEM	DFT	m²/L
CONCRETE (smooth, precast)	Clean and degrease surface to remove contaminants and bond breakers	1st Coat 2nd Coat	Durebild® STE Weathermax® HBR	80 µm 100 µm	10.5 7.0
STEEL	Abrasive blast AS1627.4 Class 2.5	1st Coat 2nd Coat 3rd Coat	Zincanode® 402 Duremax® GPE Weathermax® HBR	75 µm 125 µm 80 µm	6.4 5.7 8.8
GALVANISED STEEL	Degrease. Whip blast to remove white rust and shiny areas	1st Coat 2nd Coat	Durebild® STE Weathermax® HBR	125 µm 100 µm	6.7 7.0
PAINTED SURFACES	Remove degraded paint and surface contaminants, degloss, repair defects and abrade to provide a key	1st Coat 2nd Coat	Durebild® STE Weathermax® HBR	125 µm 100 µm	6.7 7.0
ACRATHANE® IF					
SURFACE	PREPARATION		SYSTEM	DFT	m²/L
CONCRETE (smooth, precast)	Clean and degrease surface to remove contaminants and bond breakers	1st Coat 2nd Coat 3rd Coat	Acrathane® IF (Clear) Acrathane® IF (Clear) Acrathane® IF (Clear)	60 µm 60 µm 60 µm	7.2 7.2 7.2
CONCRETE (smooth, precast)	Clean and degrease surface to remove contaminants and bond breakers	1st Coat 2nd Coat 3rd Coat 4th Coat	Acraprime™ 501/1 or 501/2 AcraShield® 955 AcraShield® 955 Acrathane® IF Clear	20 µm 75 µm 75 µm 60 µm	10.0 6.0 6.0 7.2
MILD STEEL	Abrasive blast AS1627.4 Class 2.5	1st Coat 2nd Coat 3rd Coat	Zincanode® 402 Duremax® GPE Acrathane® IF	75 µm 125 µm 60 µm	6.4 5.7 7.2
GALVANISED STEEL	Degrease with Gamlen CA1. Whip blast to remove white rust and shiny areas	1st Coat 2nd Coat 3rd Coat	Durebild® STE Acrathane® IF Acrathane® IF	125 µm 60 µm 60 µm	6.7 7.2 7.2
PAINTED SURFACES	Remove degraded paint and surface contaminants, degloss, repair defects and abrade to provide a key	1st Coat 2nd Coat 3rd Coat	Durebild® STE Acrathane® IF Acrathane® IF	125 µm 60 µm 60 µm	6.7 7.2 7.2
DURETHANE™ (CLEAR)					
SURFACE	PREPARATION		SYSTEM	DFT	m²/L
CONCRETE (Smooth, precast)	Clean and degrease surface to remove contaminants and bond breakers	1st Coat 2nd Coat 3rd Coat	Durethane™ Durethane™ Durethane™	40 µm 40 µm 40 µm	13.8 13.8 13.8
FIBRE CEMENT PANELLING	Ensure all surfaces are clean and dry. Remove all or loosely adherent fibre particles	1st Coat 2nd Coat	Durepon® Sandable Primer Weathermax® HBR Durethane™ (Clear)	60 µm 80 µm 40 µm	8.6 8.8 13.8
STEEL	Abrasive blast AS1627.4 Class 2.5	1st Coat 2nd Coat 3rd Coat	Duremax® GPE ZP Weathermax® HBR Durethane™ (Clear)	150 µm 80 µm 40 µm	4.7 8.8 13.8

CONTACT US

AUSTRALIA

NSW	15 Gow St Padstow 2211	+61 2 9794 9841
NT	Cnr Stuart Hwy & Bombing Rd Winnellie 0810	+61 8 8947 7011
QLD	1477 Ipswich Rd Rocklea 4106	+61 7 3867 8470
SA	Unit 3, 107 Sir Donald Bradman Dr Hilton 5033	+61 8 7071 4000
TAS	393 Westbury Rd Launceston 7250	+61 3 6341 1778
VIC	1956 Dandenong Rd Clayton 3168	+61 3 9263 5803
WA	276 Rutland Ave Welshpool 6106	+61 8 6465 2646

NEW ZEALAND

AUCKLAND	123 Carlton Gore Rd Newmarket	+64 9 368 2824
WELLINGTON	150 Hutt Park Rd Lower Hutt	+64 4 576 6400
CHRISTCHURCH	171 Ferry Rd Christchurch	+64 3 366 5415

PAPUA NEW GUINEA

MOROBE PROVINCE	Air Corps Rd Lae	+67 5 472 3633
NATIONAL	Spring Garden Rd Hohola Port Moresby	+67 5 325 4555

EMAIL

marketing@duluxprotectivecoatings.com.au

www.duluxprotectivecoatings.com.au

® Dulux, the Squares Device, Acrathane, Weathermax, Acrashield, Colorfast, Sellys and Muck-Off are registered trade marks of DuluxGroup (Australia).

TM Surfaceshield, Durethane and Acraprime are trade marks of DuluxGroup (Australia).

® Watch Dog is a registered trade mark of Dumond.

July 2015.

